

MAPLE AVENUE IMPROVEMENTS ROAD CLOSURES

NORTH STREET

CANFIELD ROAD

SECTION CLOSED TO THROUGH TRAFFIC WITH RESTRICTED DATES (SCHOOLS SUMMER BREAK) LOCAL ACCESS PERMITTED ~ 5/31/16 TO 8/26/16

CROSS STREET INTERSECTIONS TO REMAIN OPEN EXCEPT WHEN WORK COMPLETED IN INTERSECTION

NORTH STREET

MAPLE AVENUE




SECTIONS CLOSED TO THROUGH TRAFFIC FOR PROJECT DURATION RESIDENT ACCESS PERMITTED ~ 5/1/16 TO 10/28/16

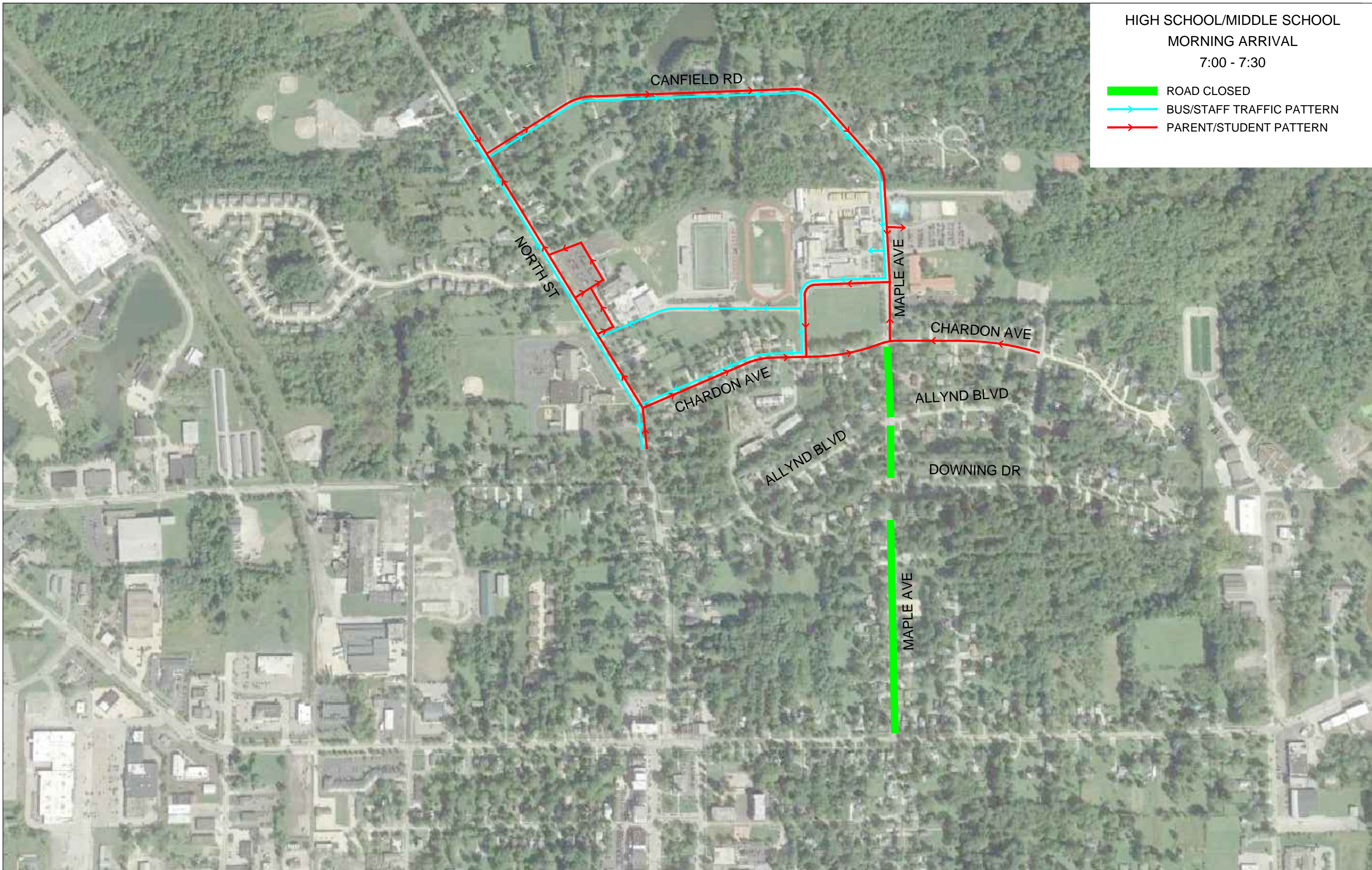
CENTER STREET

N. HAMB DEN STREET

HIGH SCHOOL/MIDDLE SCHOOL
MORNING ARRIVAL




7:00 - 7:30

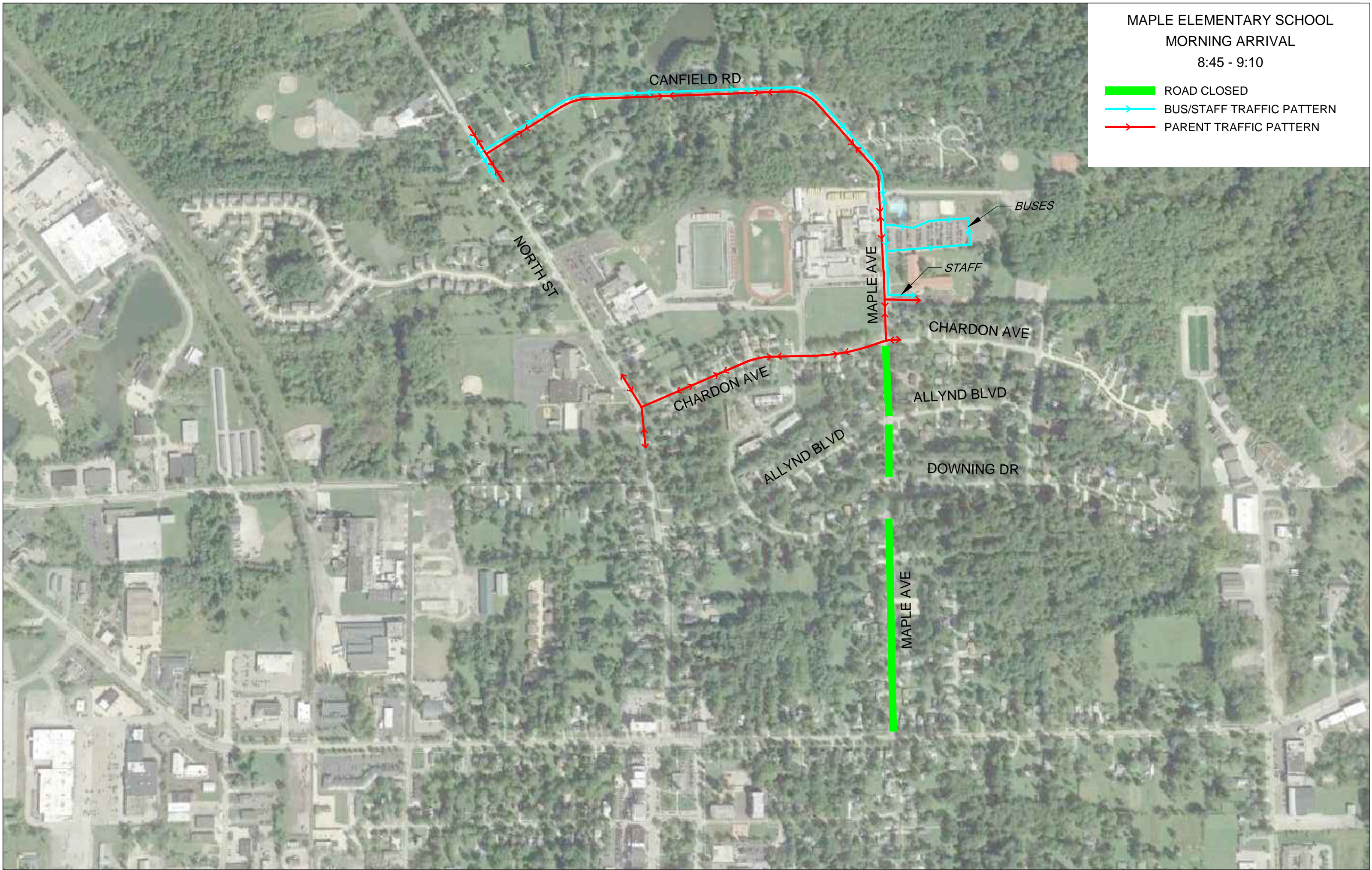
-  ROAD CLOSED
-  BUS/STAFF TRAFFIC PATTERN
-  PARENT/STUDENT PATTERN



MAPLE ELEMENTARY SCHOOL
MORNING ARRIVAL

8:45 - 9:10

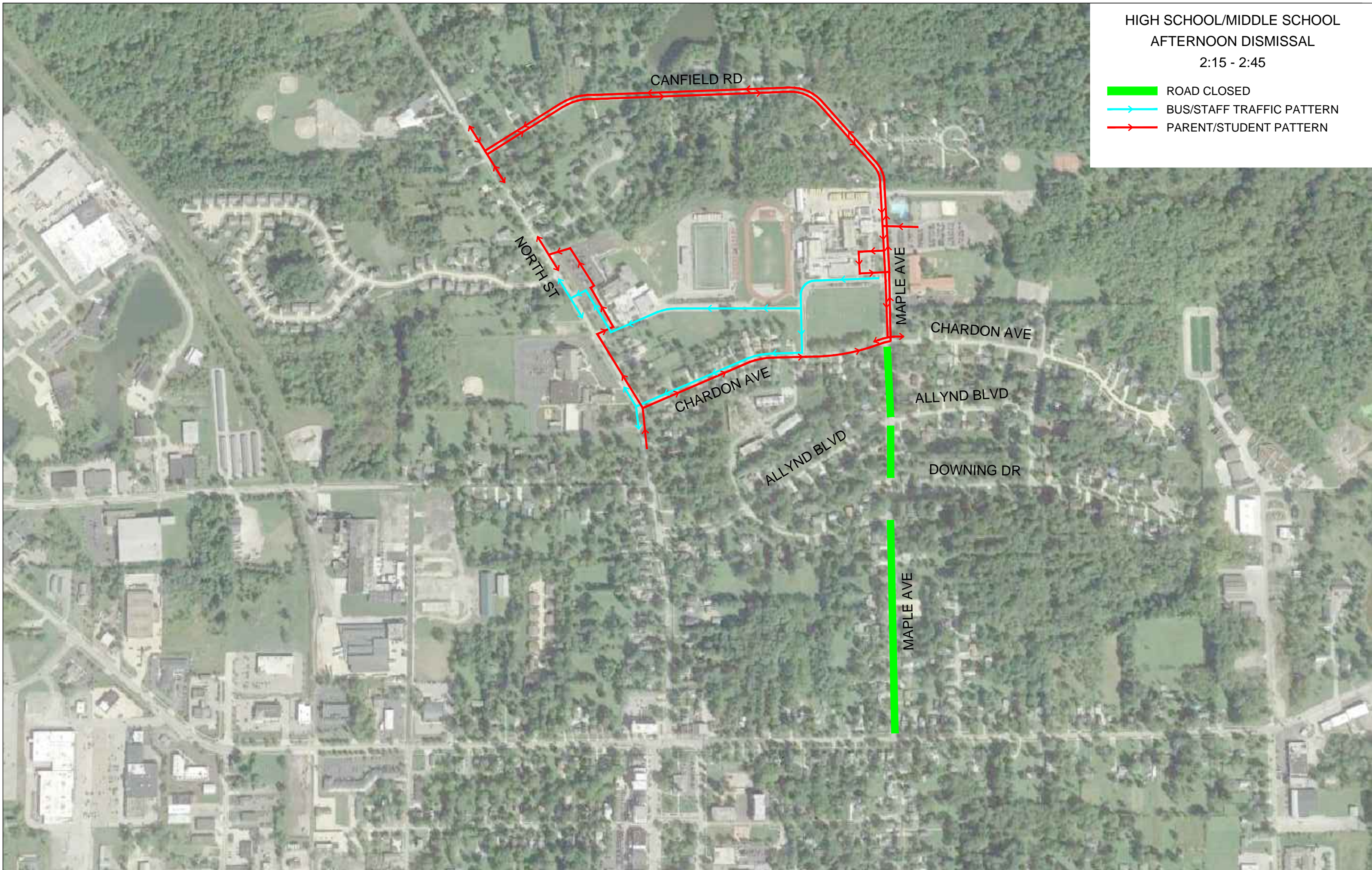
-  ROAD CLOSED
-  BUS/STAFF TRAFFIC PATTERN
-  PARENT TRAFFIC PATTERN



HIGH SCHOOL/MIDDLE SCHOOL
AFTERNOON DISMISSAL

2:15 - 2:45

- ROAD CLOSED
- BUS/STAFF TRAFFIC PATTERN
- PARENT/STUDENT PATTERN



MAPLE ELEMENTARY SCHOOL
AFTERNOON DISMISSAL

3:15 - 3:40

- ROAD CLOSED
- BUS/STAFF TRAFFIC PATTERN
- PARENT TRAFFIC PATTERN

